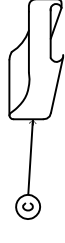


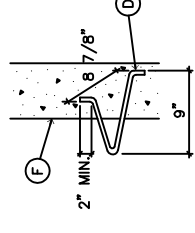
TYPICAL MANHOLE

NOTES:

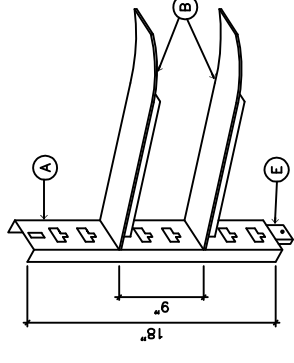
1. PROVIDE RATED GALVANIZED MANHOLE LADDER.
2. DETAIL IS FOR REFERENCE ONLY. VERIFY DIMENSIONS AND REQUIREMENTS WITH MANUFACTURER CUT SHEETS PRIOR TO INSTALLATION.
3. PROVIDE .6" COMPACTED CRUSHED ROCK BASE OVER 2" COMPACTED SAND BASE FOR LEVELING.
4. INSTALL MANHOLE PER MANUFACTURER REQUIREMENTS.



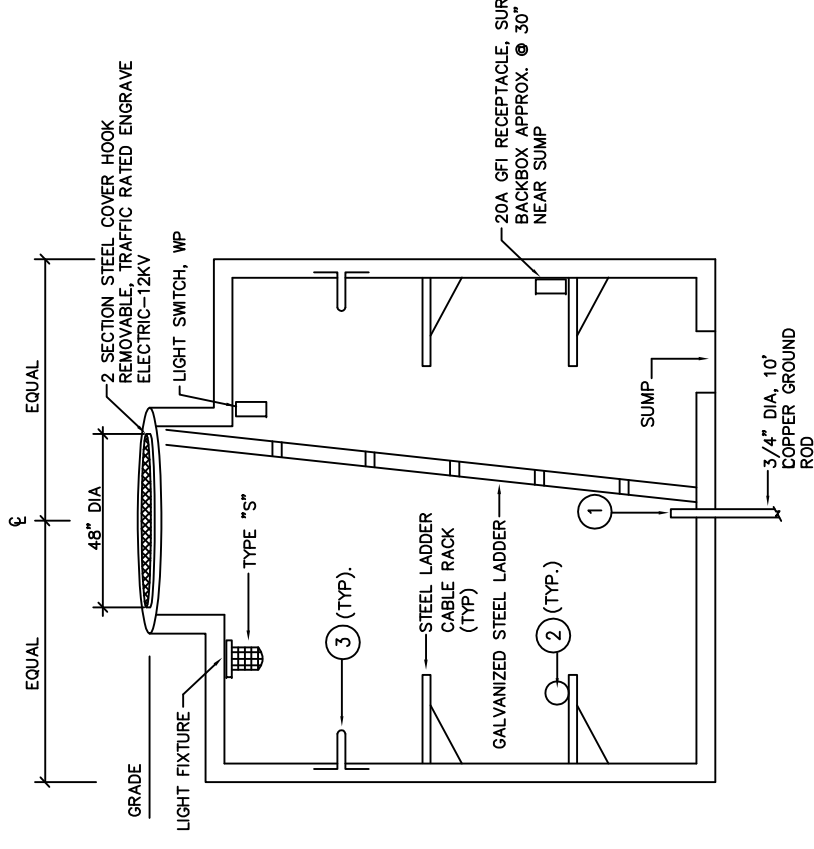
HOOK TYPE INSULATOR



PULLING IRON



CABLE RACK



NOTES:

1. GROUND & BOND ALL NON-CURRENT CARRYING CONDUCTORS TO GROUND ROD NEAR WALL
2. CABLE SHALL BE FULLY LOOPED (360°) IN MANHOLE & SECURED TO CABLE RACK
3. PULLING IRON EYE ON EACH WALL

ITEM	BILL OF MATERIALS
(A)	CABLE RACK HOT DIP GALVANIZED
(B)	INSULATOR WELDED SUPPORT, 8"
(C)	HOOK TYPE INSULATOR
(D)	PULLING IRON 7/8" Ø GALVANIZED
(E)	SLOT FOR 1/2" BOLT AND LEAD ANCHOR
(F)	8" THICK CONCRETE WALL AT 4500 PSI

SECTION A