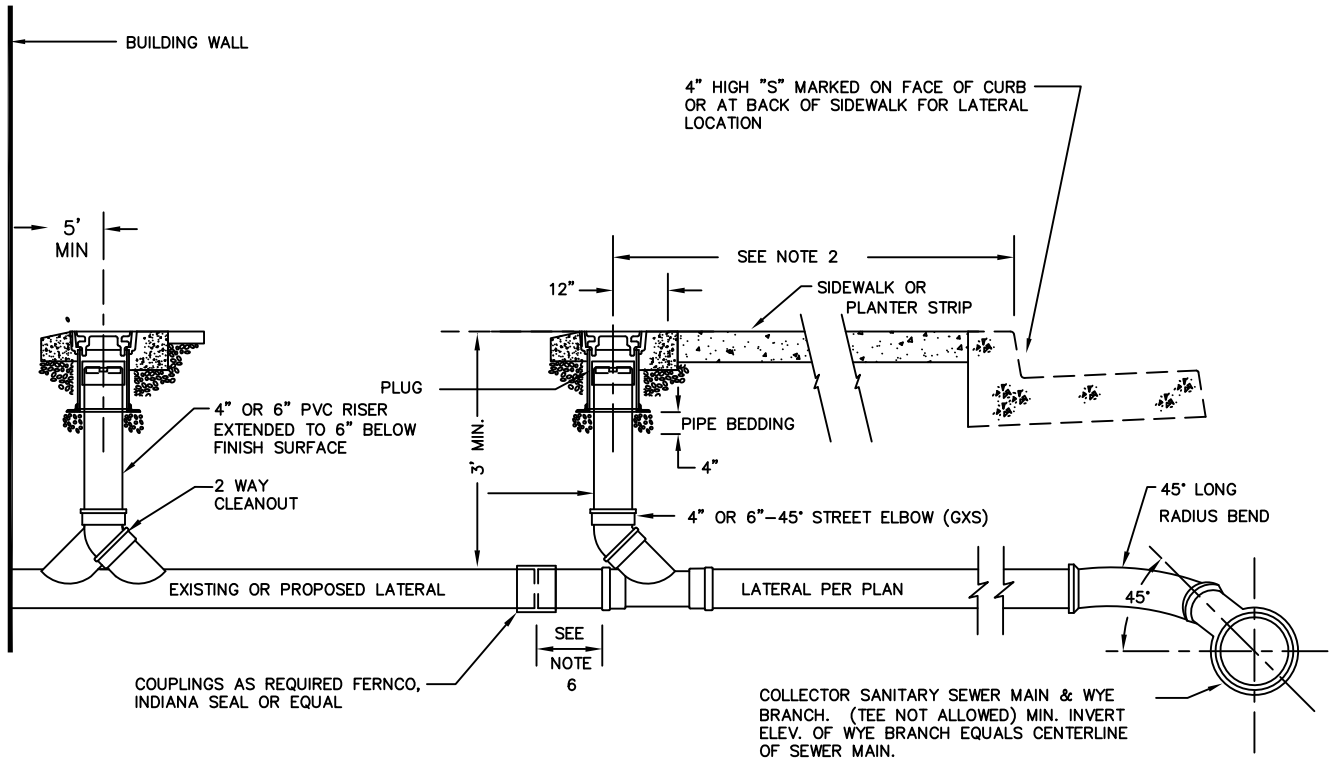


**APPROVED CLEANOUT BOXES**

TRAFFIC AREAS USE, CHRISTY G5 OR EQUAL.  
 NON-TRAFFIC AREAS USE, CHRISTY F8 OR EQUAL.  
 ALL BOXES WITH CASE IRON LID MARKED "SEWER".  
 PROVIDE COMPRESSION PLUG IN CLEANOUT.



**NOTES:**

1. THE SEWER SERVICE LATERAL SHALL BE OF SUFFICIENT DEPTH TO ADEQUATELY SERVE THE BUILDING SITE, AND IN NO CASE SHALL BE LESS THAN 3 FT. DEEP AT THE CLEANOUT UNLESS OTHERWISE AUTHORIZED BY THE UNIVERSITY'S REPRESENTATIVE.
2. CLEANOUT TO BE INSTALLED 18" FROM FACE TO CURB OR 12" MAXIMUM BEHIND SIDEWALK. WHERE SERVICE IS IN DRIVEWAY, INSTALL CLEANOUT 18" BEHIND APRON.
3. IN CASES WHERE THE CLEANOUT INSTALLATION CONFLICTS WITH EXISTING FACILITIES, THE CONTRACTOR SHALL VERIFY AN ALTERNATE LOCATION WITH THE UNIVERSITY'S REPRESENTATIVE PRIOR TO INSTALLATION.
4. MINIMUM 2% SLOPE FOR 4" LATERALS AND A MIN. 1% SLOPE FOR 6" LATERALS ARE REQUIRED UNLESS A VARIANCE IS SPECIFICALLY APPROVED BY THE UNIVERSITY'S REPRESENTATIVE.
5. A MINIMUM OF 12" WHEN CONNECTING TO EXISTING SEWER LATERAL OR EXTEND TO 1' BEHIND SIDEWALK FOR NEW CONSTRUCTION.
6. FOR NEW CONSTRUCTION, INSTALL CAP OR PLUG AT END OF SERVICE LATERAL.
7. LATERAL MATERIAL SHALL BE PVC SDR 35 OR DUCTILE IRON PIPE.
8. CLEANOUT COMPONENTS SHALL BE THE SAME SIZE AS THE LATERAL.
9. TAP FITTINGS ON THE MAINS SMALLER THAN 12" MAY ONLY BE USED UNDER THE APPROVAL OF THE UNIVERSITY'S REPRESENTATIVE.

**LATERAL CONNECTIONS TO EXISTING MAINS:**

MAIN SIZE & MATERIAL	CONNECTION TYPE	COUPLINGS
6-10" ACP, VCP	CUT IN PVC WYE W/12" SPOOLS EACH END	RUBBER W/STEEL SHEAR BANDS
6-10" PVC	CUT IN PVC WYE W/12" SPOOLS EACH END	RIGID SLIP COUPLINGS
6-10" DIP	CUT IN DIP WYE W/12" SPOOLS EACH END	DIP COUPLINGS
12" AND LARGER	TAP FITTING ROMAC "CB" STYLE OR EQUAL	NA

**UNIVERSITY OF CALIFORNIA, DAVIS**

**SERVICE LATERAL AND CLEANOUT**

REVISION: 1

SCALE: NONE	DATE: JULY 08
DWN: KH CHK: VG	APPROVED FILE NO. SS-04