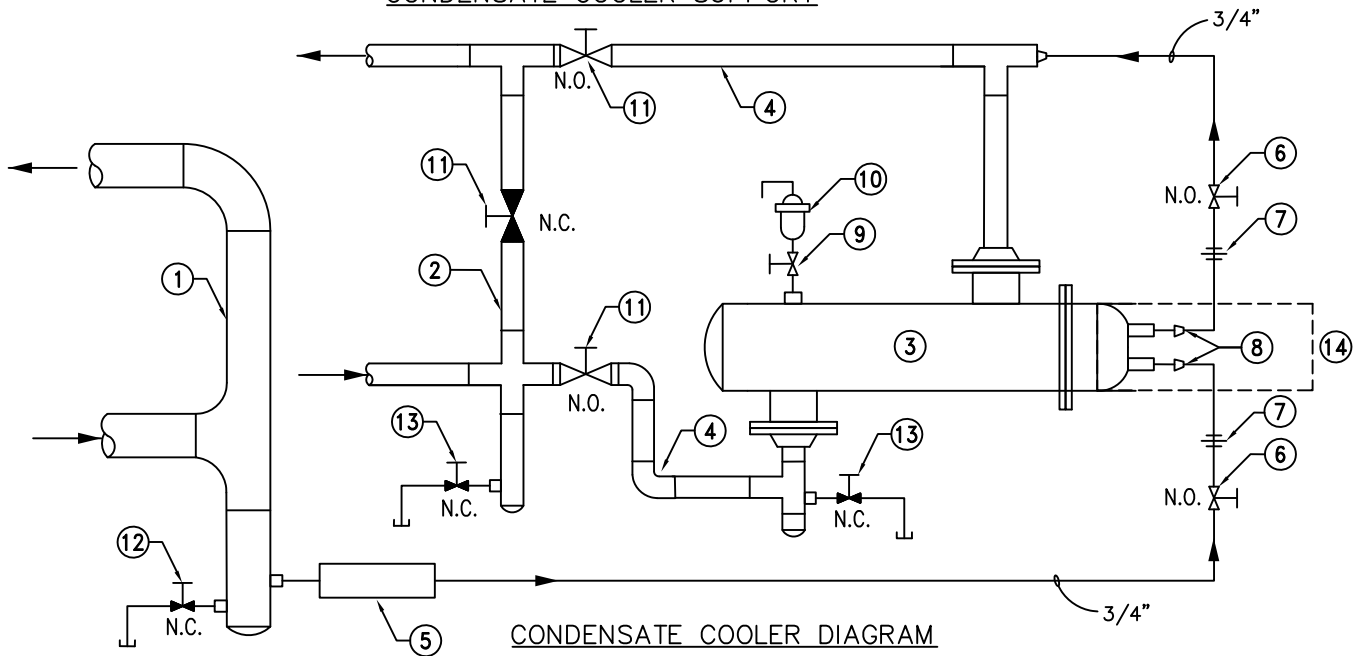


**NOTES:**

1. PROVIDE 2 SUPPORTS PER CONDENSATE COOLER.
2. ALL STEEL COMPONENTS SHALL BE HOT DIPPED GALVANIZED AFTER FABRICATION.

**CONDENSATE COOLER SUPPORT**



**KEY NOTES:**

- |   |   |
|---|---|
| <ul style="list-style-type: none"> <li>① STEAM RISER</li> <li>② CONDENSATE RETURN RISER</li> <li>③ CONDENSATE COOLER</li> <li>④ CONDENSATE LINE TO/FROM CONDENSATE COOLER SHALL BE SAME SIZE AS MAIN CONDENSATE PIPING</li> <li>⑤ STEAM TRAP SET, SEE DETAIL ST-06</li> <li>⑥ ISOLATION VALVE<br/>3/4" BALL VALVE, BRONZE, 150# SWP, FULL PORT</li> <li>⑦ UNION, CLASS 150, B.M.I.</li> <li>⑧ REDUCER TO MATCH CONDENSATE COOLER CONNECTIONS</li> <li>⑨ 1/2" BALL VALVE, BRONZE, 150# SWP, FULL PORT</li> <li>⑩ HIGH POINT AIR VENT IF CONDENSATE COOLER IS MOUNTED VERTICALLY</li> </ul> | <ul style="list-style-type: none"> <li>⑪ ISOLATION VALVE- SAME SIZE AS RISER GATE VALVE, BRONZE, CLASS 150, RISING STEM OR BALL VALVE, BRONZE, 150# SWP, FULL PORT</li> <li>⑫ DRAIN VALVE AT STEAM RISER LOW POINT<br/>3/4" BALL VALVE, BRONZE, 250# SWP, FULL PORT</li> <li>⑬ DRAIN VALVE AT CONDENSATE RISER LOW POINT<br/>3/4" BALL VALVE, BRONZE, 150# SWP, FULL PORT</li> <li>⑭ TUBE PULL CLEARANCE</li> </ul> |
|---|---|

**UNIVERSITY OF CALIFORNIA, DAVIS**

**CONDENSATE COOLER IN STEAM VAULT**

REVISION: 2

SCALE: NONE

DATE: JULY 2011

DWN: EY  
CHK: VG

APPROVED

FILE NO.  
ST-03