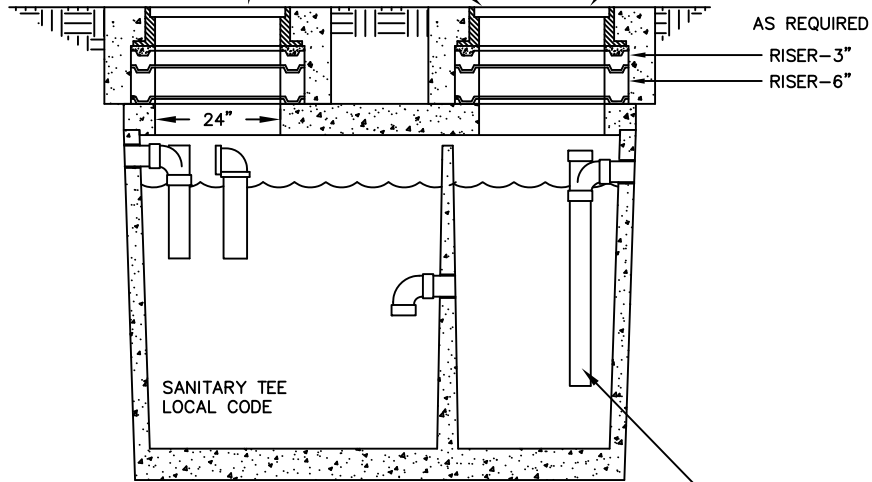


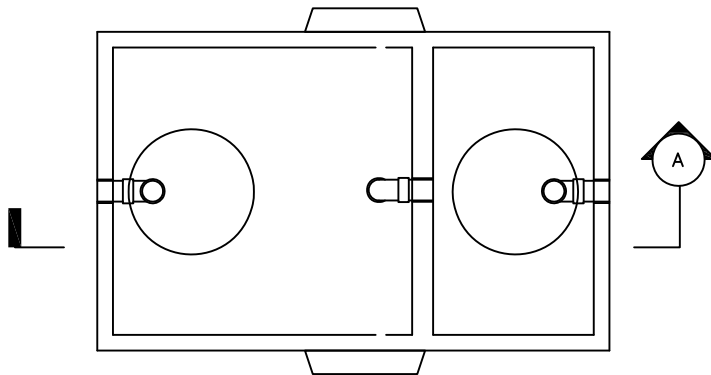
24" CAST IRON FRAME & COVER WITH GASKET REFER TO DETAIL [SS-02]

TEXT ON MANHOLE SHOULD READ "OIL-SAND SEPERATOR" TYPICAL OF 2



SECTION A

4" MINIMUM INLET & OUTLET PIPE AND FITTINGS TYPICAL



PLAN
(COVERS & RISERS NOT SHOWN)

NOTES:

LIQUID CAPACITY: [AS SPECIFIED BY DESIGN ENGINEER]

INLET/OUTLET SIZE: [AS SPECIFIED BY DESIGN ENGINEER]

BOX DESIGN LOAD: H-20 TRAFFIC FROM 1' TO 6' OF SOIL COVER.

NOTES TO DESIGN PROFESSIONAL:

1. VERIFY AND EDIT TEXT IN BRACKETS [].

UNIVERSITY OF CALIFORNIA, DAVIS		
OIL- SAND SEPARATOR		
REVISION: 1		
SCALE: NONE	DATE: JULY 08	
DWN: KH CHK: VG	APPROVED	FILE NO. SD-02